



# ONE WORLD

STUDENT INFORMATION SYSTEM



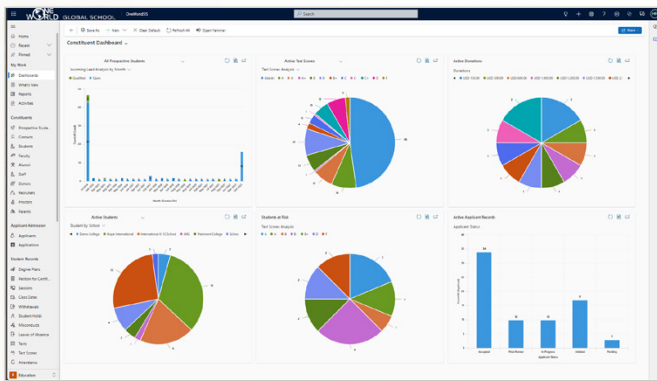
**Built on the Microsoft Power Platform**

Cost effective and easy to implement, manage the complete student lifecycle on one flexible, powerful and extendable platform.

# Educational institutions can now implement one true, end-to-end constituent lifecycle solution with technology vision built for the future.

## Recruitment & Prospective Student Journey

Enter and track prospective student leads from an initial inquiry to marketing activities, interviews and applying to enroll. Tailor the OneWorldSIS Portal to deploy visually pleasing web pages for prospective students to express interest and inquire about attending.



*Role-based dashboard monitors activity and summarizes activities.*

## Marketing

Create personalized multi-channel marketing campaigns and leverage Copilot AI marketing automation functionality to reach your targeted audience. Build communications plans based on historical interactions, personal preferences or specific areas of interest. Quickly build marketing activities with scripted dialogs and user defined follow up workflow activities using Power Automate and CoPilot AI.

## Application and Enrollment Processing

Provide prospects with an easy-to-use guide for the admissions process, including admissions forms, application submission and follow up activities. Set up and manage applicant checklist items with automated follow up and personalized notes.

## Contacts

Manage all student and constituent activity with intelligent email analysis using CoPilot AI with automated workflow tracking and routing. View the history of all student and constituent related activities, including Outlook Calendar Appointments, Tasks, Emails, Phone Calls and any other user defined activities.

## Student Information

Turn prospective students into active applicants with all background and relevant information within the one database. Use Microsoft Power Automate workflows to auto create follow up activities including interviews, email notifications, transcript reviews and required responses.

## Student Record Management

Store, oversee and manage all aspects of student information maintained including academic, disciplinary, administrative, degree, course, and class attendance and grades.

A screenshot of the OneWorldSIS application processing interface. It shows a detailed view of an applicant named 'Fred Thomas'. The interface includes a sidebar with navigation options like Home, Recent, My Work, Dashboards, Reports, and Activities. The main area displays a timeline of the applicant's journey, including 'Initial Review', 'Review And Accept', and 'Apply'. There are also sections for 'Contact', 'Timeline', and 'Highlights'.

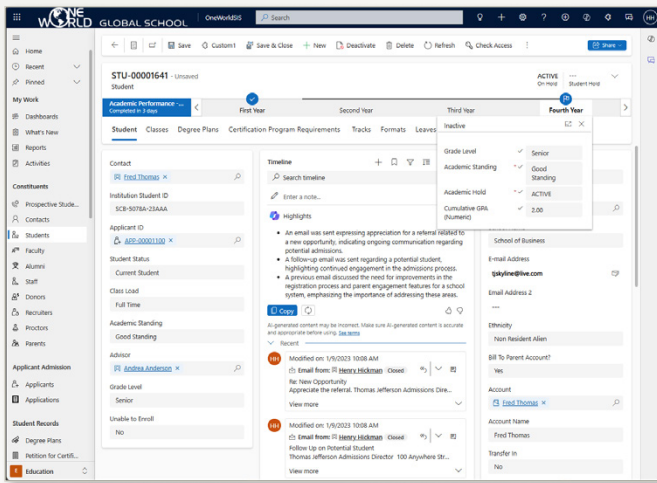
*Manage applicant and admissions enrollment processes using Copilot AI to summarize activities and create automated follow up emails.*



## Empower your school with Microsoft 365 Copilot and OneWorldSIS

OneWorldSIS' native incorporation of Microsoft Copilot AI within its Student Information System brings powerful generative AI capabilities that transforms the user experience and increases their ability to do more with less.





*Intuitive interactive process-based forms allow you to tailor your environment for maximum efficiency.*

## Degree and Class Management

Set up degree programs and course records to manage and schedule classes with the ability to track attendance, create tests, and enter standard grades or competency skills with available progress reports.

## Faculty Management

Track, and manage, faculty and staff activities working with students through their academic success journey. Use Microsoft HR to add additional functionality to manage the day-to-day activities of the human resources department. Develop workflows and reporting analytics to better support faculty and staff in monitoring and tracking at risk students and develop automated retention and prevention programs.

## Alumni Management

Track and manage all Alumni information and communications with recurring dates and activities, following cultivation processes. Use Marketing Campaigns to reach and update Alumni on relevant information and events. Configure the Alumni portal for direct and secure access to relevant records.

## Extracurricular Activities

Setup and track institution activities including clubs, afterschool functions, and athletic events. Use Copilot AI and Power Apps to quickly develop unique activity tracking applications and club software programs.

## Events

Use the OneWorldSIS portal to allow constituents to sign up and track events with automatically generated follow up processes and survey information.

## Document Management

Use SharePoint, Azure Datalake, OneDrive for Education and note attachments to track and manage critical applicant and student documents and files.

## Accessibility

As a true SaaS application, access all the functions you need to support students, faculty, staff, and constituents accessed at any time, on any device, on any operating system or browser.

## Financial Aid and Learning Management System Integrations

Interface with leading industry financial aid solutions including Global Financial Aid Solutions, Campus Ivy, and PowerFAIDS. Use rostering and grade integrations to leading LMS solutions such as Moodle, Canvas, and D2L.

## Reporting Tools

Use PowerBI Reports and SQL Reporting Service to generate reports and export report information and institution metrics.

## Outlook Integration

Create and track all Outlook and Contact activities seamlessly in one location with automated follow ups and access within Teams. Track emails automatically and display email information along with all previous history in one Timeline. Automatically summarize previous conversations and activities using Microsoft CoPilot AI when interacting with Students and Constituents.

## Business Intelligence

Intelligent Built-in and PowerBI visually pleasing dashboards to surface critical institution metrics with powerful drilldown capabilities to the underlying records. Use Microsoft PowerBI and CoPilot AI analytics to identify students in trouble, increase retention rates, and drive predictive preventative measures.

## Power Platform

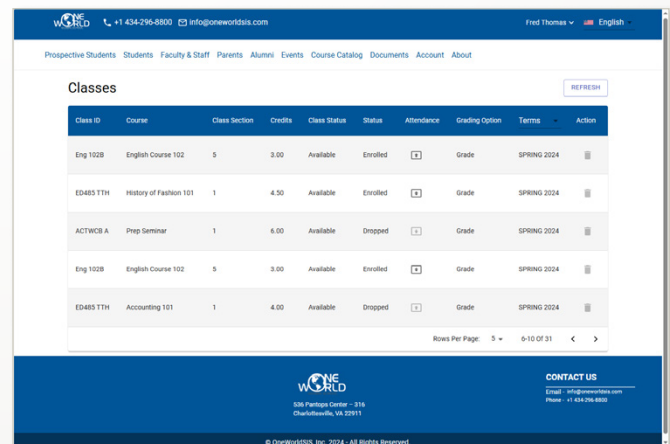
Use Microsoft's Power Platform Copilot AI foundation to analyze data, build low code solutions, set up workflows, and create virtual agents. Add Predictive Analytics and the ability to read document attachments in the AI Hub.

## Business Processes

Build intelligent processes to track and manage activities and key constituent data across multiple areas with validation and defined logic.

## OneWorldSIS Portal Suite

Use the OneWorldSIS Portal Suite to manage student records, create inquiries, manage the application process, provide faculty access, and allow Alumni and Donors to update records and donate. Use style sheets to create branded web pages specific to your educational institution.



*Tailor the OneWorldSIS Portal Suite to meet the day-to-day needs of the Applicants, Students, Faculty, Alumni and Donors to manage their institution data.*

# Your Education Partner Delivering Transformative Technology

OneWorldSIS delivers future proof educational solutions that enable users and constituents to achieve the most optimal organizational processes possible. Built on the powerful, and extendable Microsoft Power Platform and optimized by Copilot AI, OneWorldSIS represents a paradigm shift in the way educational institutions manage the complete student lifecycle.



## Each School Has Unique Technology Needs

We work with each education institution to identify goals, timelines and budgets. Colleges and Universities, Career and Technical Schools, International Schools and Continuing Education Programs, whether 10 or 10,000+ students, each school is unique and we strategize to develop the best plan of action to ensure success.



## Long-term Relationship = Long-term Success

OneWorldSIS provides professional project management services and technical expertise throughout your implementation. Continuous process improvement is the key to taking advantage of the native workflow automation capabilities to deliver real and meaningful productivity gains. Education institutions will be able to better utilize technology to build long-term efficiencies and reduce expenses.



OneWorldSIS, Inc.  
536 Pantops Center, #316  
Charlottesville, VA 22911 USA

## Learn More

434.296.8800  
[info@oneworldsis.com](mailto:info@oneworldsis.com)  
[oneworldsis.com](http://oneworldsis.com)

